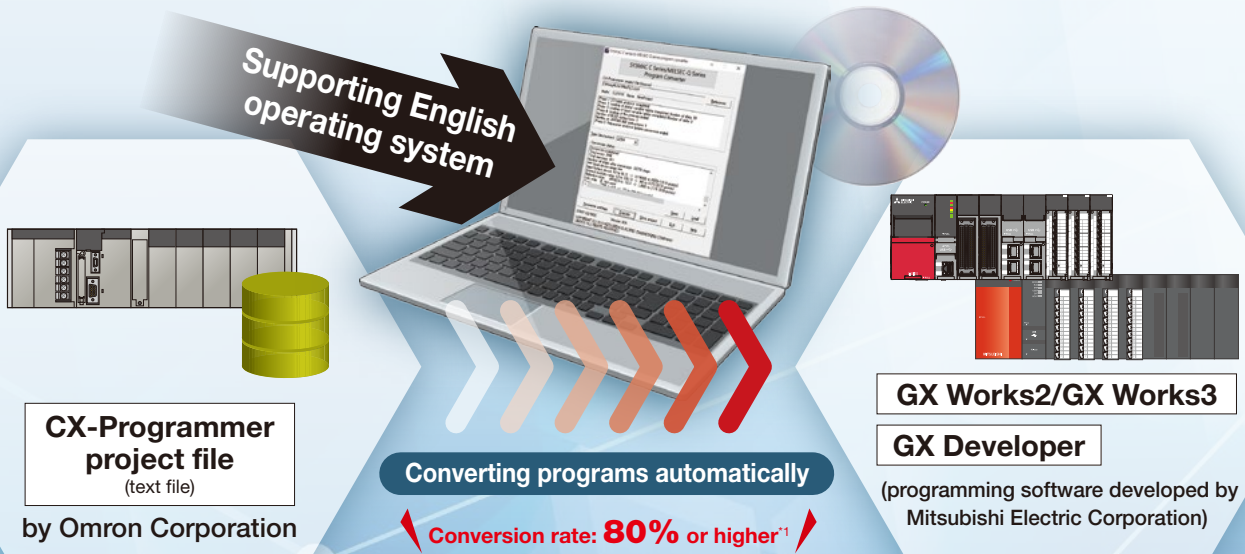


OMRON SYSMAC C Series → MELSEC Series Program Converter

Model: ERNT-CQ1W2C (Ver.30A)

Compatible with English and Japanese versions of Windows® operating system



Program converter **SYSMAC C series**

Conversion target

OMRON

SYSMAC **CS1, CJ1, CJ2**^{*2}, C200H/HS/HX/HE/HG
SYSMAC C1000H, C2000H

^{*1}: For details, refer to the "Percentage of the converted amount".

^{*2}: Program conversion is available after project files for the CJ2 series are converted into project files for the CJ1 series using CX-Programmer.

Reducing time and cost for program conversion

- SYSMAC C series CPUs are automatically identified.
- The percentage of converted programs is 80% or higher (calculated based on the instruction usage ratio).

Enhancing support service for conversion

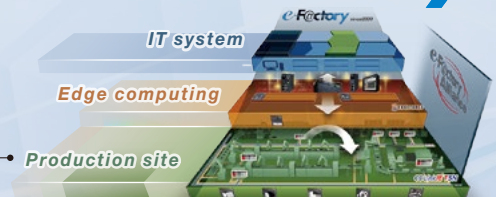
- Online help is available for users to check how to convert each unconverted instruction.

Saving converted data

- Converted data are saved as CSV files (programs and comments) that can be loaded to GX Works2 or saved as GX Developer project files.

To use these converted data in MELSEC iQ-R series modules, convert them by using GX Works2 and GX Works3.

FA products **e-Factory**



Source: Mitsubishi Electric Corporation

The program converter helps users who want to replace SYSMAC C series units with MELSEC series modules

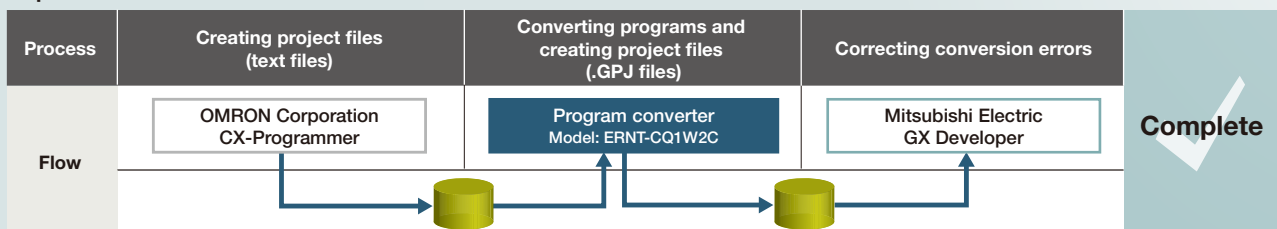
What is the program converter?

The program converter is software to convert OMRON SYSMAC C series programs to GX Developer project files.

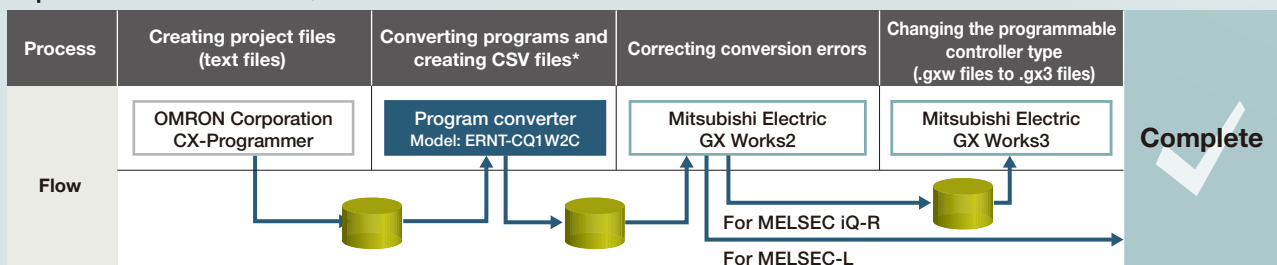
When using the SYSMAC C series programs in MELSEC iQ-R series modules, convert the programs (CX-Programmer project files) with this program converter. After that, convert them into project files compatible with the programming software for MELSEC iQ-R series, GX Works3.

Program conversion process flow

Replacement with MELSEC-Q series

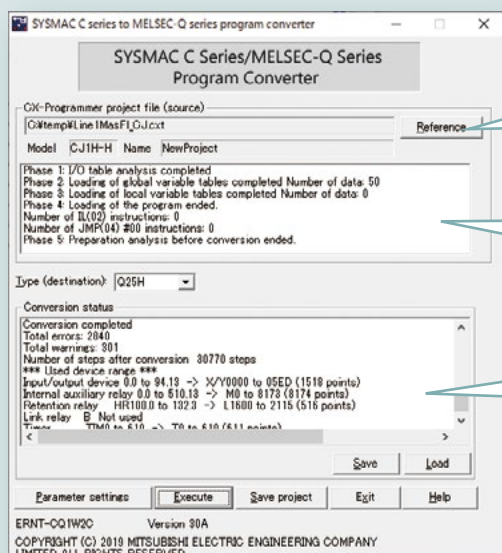


Replacement with MELSEC iQ-R/L series



* Data can be saved as files that can be displayed in the ladder edit window or the comment edit window of GX Works2.

Program converter startup window



1 Select the conversion source project (.cxt file).

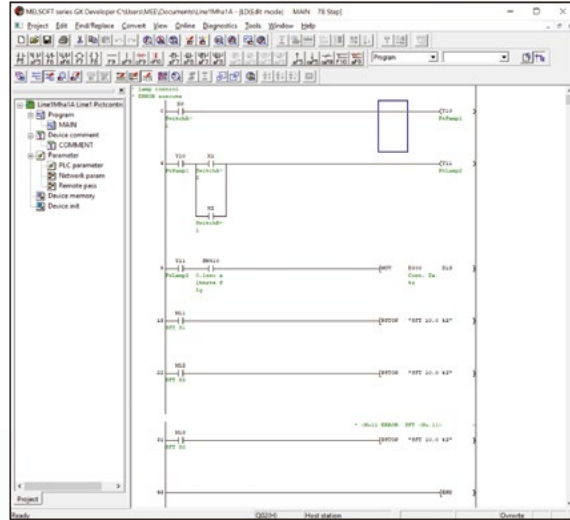
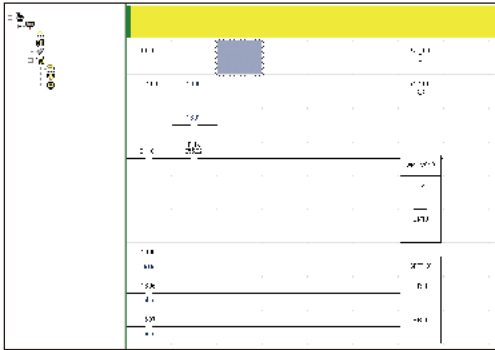
2 Analysis results of the selected project file are displayed.

3 Conversion errors and warning messages are displayed in line. Double-click them to check the online help.

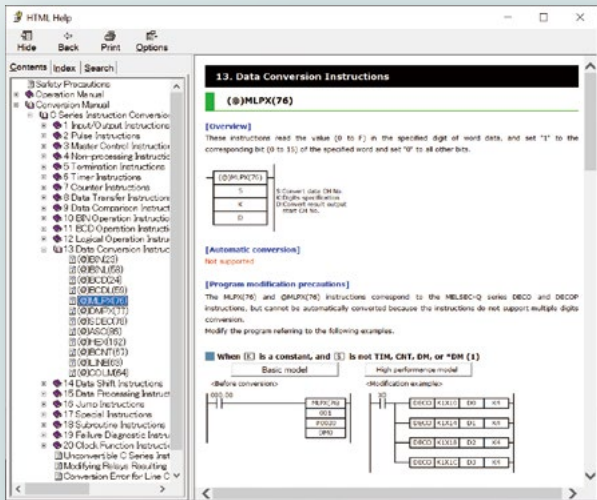
Conversion source program (CX-Programmer)

Conversion

Converted program (GX Developer)



Online help



Users can proceed with the conversion while checking how to convert each instruction.

Users can replace unconverted programs with sample programs by copying them from the online help file and pasting them on GX Developer.

Percentage of the converted amount

• C1000H/2000H/200H series

Sequence program instruction classification	Simple comparison			Instruction usage ratio ^{*1}	Program conversion ratio	
	No. of instructions	No. of convertible instructions	Conversion ratio			
Sequence instructions	Basic instructions	17	17	100%	51%	
	Timer/counter	4	3	75%	3%	
	Transfer instructions	9	7	78%	19%	
Data instructions	Arithmetic and function instructions	17	15	88%	8%	
	Comparison logical instructions	10	7	70%	6%	
	Other	Special module step ladder block instructions	22	0	29%	7%
	Other than the above	46	20		2%	
Total		125	69	55%	100%	
					Approx. 80% ^{*2}	

• CS1/CJ1 series

Sequence program instruction classification	Simple comparison			Instruction usage ratio ^{*1}	Program conversion ratio	
	No. of instructions	No. of convertible instructions	Conversion ratio			
Sequence instructions	Basic instructions	55	54	98%	51%	
	Timer/counter	22	18	82%	3%	
	Transfer instructions	15	11	73%	25%	
Data instructions	Arithmetic and function instructions	193	124	64%	8%	
	Comparison logical instructions	54	27	50%	6%	
	Other	Special module step ladder block instructions	97	7	15%	7%
	Other than the above	54	15		1%	
Total		490	256	52%	100%	
					Approx. 80% ^{*2}	

*1: The instruction usage ratio is the percentage (ratio) of use of sequence instructions and data instructions in all programs.

*2: This value is for reference only.

Operating environment

Item		Description
Personal computer		Personal computer on which Windows® runs
	CPU	Intel® Core™ 2 Duo processor 2GHz or higher recommended
	Memory	1GB or more recommended
HDD free space	At installation (HD)	3MB or more
	When running (virtual memory)	10MB or more
CD-ROM drive		Required during installation
Display		Resolution 800 x 600 pixels or higher

Compatible basic software (OS)

Program converter version	Ver.30A
Installable basic software (OS)	Microsoft® Windows®10 Home Microsoft® Windows®10 Professional Microsoft® Windows®10 Enterprise Microsoft® Windows®10 Education Microsoft® Windows®11 Home Microsoft® Windows®11 Professional Microsoft® Windows®11 Enterprise

Compatible Mitsubishi Electric programming software

Program converter version	Ver.30A
GX Developer version	Ver.8.45X or earlier
	Ver.8.68W or later
GX Works2 version	Ver.1.73B or later

Precautions before use

Programs for models earlier than C1000H series (such as C500) also can be converted with this program converter by taking the following steps. Firstly convert these programs into C1000H/C2000H/C200H series programs by using a file exchange utility included with CX-Programmer. After that, convert the C1000H/C2000H/C200H series programs by using the program converter.

Microsoft and Windows are either registered trademarks or trademarks of Microsoft Corporation in the United States and/or other countries. The company names and product names mentioned in this document are either registered trademarks or trademarks of their respective companies. In some cases, trademark symbols such as '™' or '®' are not specified in this document.

MITSUBISHI ELECTRIC ENGINEERING COMPANY LIMITED

NAGOYA ENGINEERING OFFICE | 1-9, Daiko-Minami, 1-Chome, Higashi-ku, Nagoya, Aichi 461-0047 Japan

Website



www.mitsubishielectricengineering.com/sales/fa/meefan/

Contact US



Precautions for Choosing the Products

Mitsubishi Electric Engineering will not be held liable for damage caused by factors found not to be the cause of Mitsubishi Electric Engineering; opportunity losses or lost profits caused by faults in the Mitsubishi Electric Engineering products; damage, secondary damage, accident compensation caused by special factors unpredictable by Mitsubishi Electric Engineering; damages to products other than Mitsubishi Electric Engineering products; and to other duties.

For safe use

- To use the products given in this publication properly, always read the relevant manuals before beginning operation.
- The products have been manufactured as general-purpose parts for general industries, and are not designed or manufactured to be incorporated in a device or system used in purposes related to human life.
- Before using the products for special purposes such as nuclear power, electric power, aerospace, medicine or passenger-carrying vehicles, consult with Mitsubishi Electric Engineering.
- The products have been manufactured under strict quality control. However, when installing the products where major accidents or losses could occur if the products fail, install appropriate backup or fail-safe functions in the system.