

Panel Mount HMI Speaker

Model: FA1-GT0S04W

New Product Release | No. 20-03E

The speaker supporting the sound output function of the GOT is now available!

Improving the servicing/maintenance/work efficiency

Notifying important information by voice as well as by on-screen display



部品の交換時期が来ました。交換してください。

Replacement time. Replace the part.

需要更換部件。請進行更換。

부품의 교환시기가 되었습니다. 교환하십시오.

Es el momento de reemplazo. Reemplace la pieza.

Easy to install

Attaching the speaker from the front and back of the panel completes the installation. The speaker and the GOT surfaces are flush with the panel surface.

Easy to connect

One audio cable connects the GOT and the speaker (with a built-in amplifier).

Rugged

The speaker is suited for use in the factory environment.*

Volume control function

The volume can be adjusted in 10 levels (90 dB max.) depending on the worksite environment.

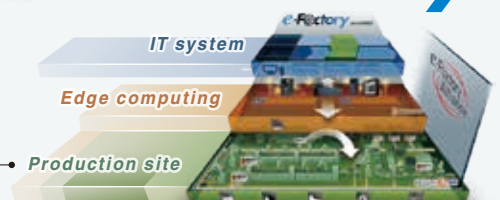
*For the details, refer to the specifications.



Panel Mount HMI Speaker

FA Goods **e-Factory**


Equipment servicing and maintenance



Having problems?

I want to grasp the equipment status from a remote location.

The sound output function of the GOT will solve the problems.



I was unaware that the equipment was not in motion.



♪♪♪ (sound effect)

Replacement time.
Replace the part.



A workpiece is jammed.
Remove the workpiece.

The speaker notifies important information accurately to the operator away from the GOT. The servicing/maintenance/work efficiency will thus improve.
(The sound output function works while the GOT is in screen saver mode.)

■ ■ ■ Various applications ■ ■ ■

Changing the touch sounds depending on the conditions

Touch sounds that match the worksite



Operation starts.

Operation stops.

Touch sounds that match the operator's preference



Touched on.

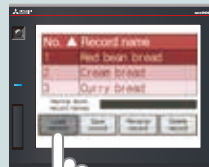
♪♪ (sound effect)

Switch pressed.

Touch sounds can be changed depending on the worksite and operator's preference.

Using the speaker as voice guidance at pressing of a touch switch

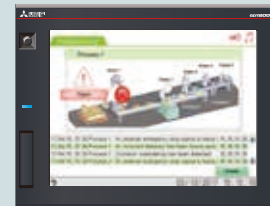
Has the material loading been completed?



When a touch switch is pressed, the next operation and precautions are voiced, which prevents incorrect operation.

Notifying necessary information accurately

Japanese ① エラーが発生しました。
English ② An error occurred in this system.
Chinese ③ 系统发生异常。
(Simplified)



The announcement in multiple languages in order is available at a worksite where the operators speak in different languages.

Registrable sounds

Messages

The speech synthesis function produces and outputs sound from any text.*2

The speaker (male/female), language, speaking speed, tone of voice, and volume can be selected in 6 languages.

Supported languages

Male



Japanese

English

Chinese (Simplified)

Korean

Spanish

Female



Japanese

English

Chinese (Simplified)

Chinese (Traditional)

Korean

Spanish

Sound effect

Melody

Sound sources registered in GT Designer3 GOT screen design software

File

WAV format sound files

*2: To register or update messages, the speech synthesis license (SW1DND-GTVO-M manufactured by Mitsubishi Electric Corporation) must be purchased and registered.

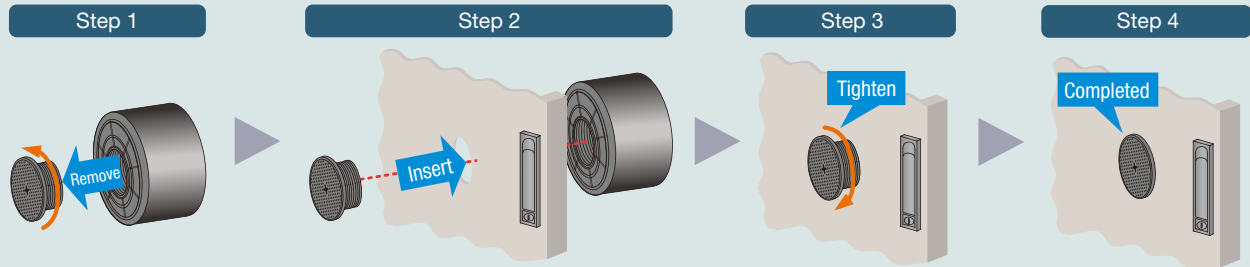
Additional value to the equipment by using the GOT sound output function

Sound output function Outputting the sounds registered*1 in the GOT through the speaker

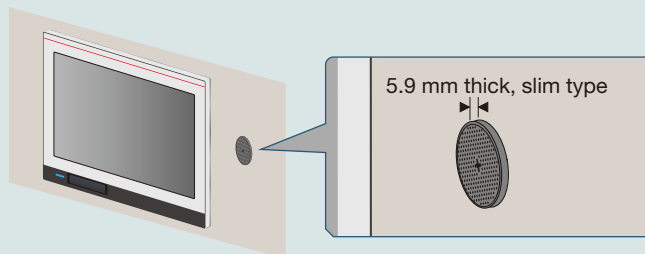
*1: For registration, use GT Designer3 GOT screen design software (manufactured by Mitsubishi Electric Corporation).

Easy to install

Attach the speaker from the front and back of the panel.



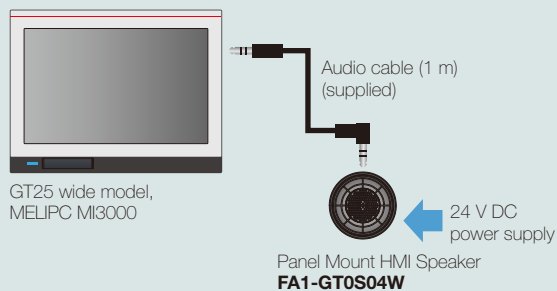
The speaker and the GOT surfaces are flush with the panel surface.



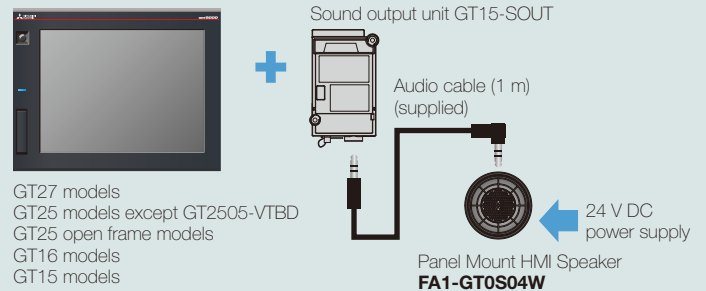
Easy to connect

Easily connectable with a GOT or MELIPC MI3000 using the audio cable

For the GOTs with a sound output interface



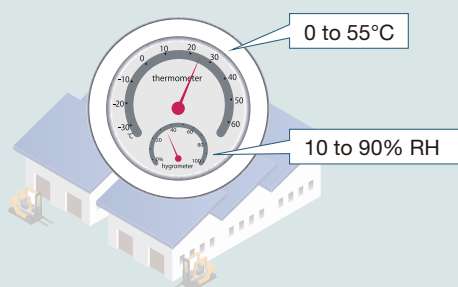
For mounting a sound output unit (GT15-SOUT) on the extension interface of the GOT



Rugged

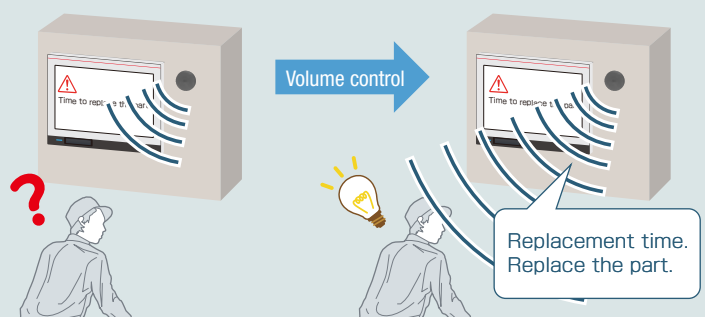
Usable at factory temperature and humidity

For the details, refer to the specifications.



Volume control function

The volume is adjustable in 10 levels (90 dB max.) depending on the noise environment.

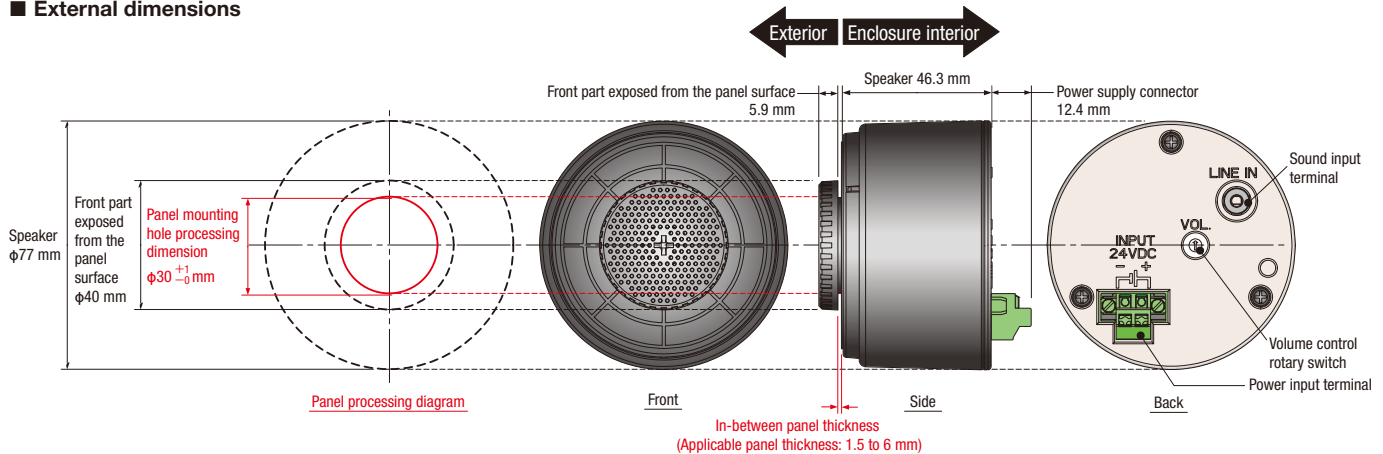


Product specifications

Item		Specifications			
Operating ambient temperature		0 to 55°C			
Operating ambient humidity		10 to 90% RH, non-condensing			
IP protection level		IP2X			
Weight		175 g			
Installation	Installation method	Interposing the panel			
	Installation hole processing dimensions	$\phi 30^{+1}_{-0}$ mm			
	Applicable panel thickness	1.5 to 6 mm			
Power supply to the built-in amplifier	Power supply voltage	24 V DC +20%, -15%			
	Current consumption	0.28 A			
	Wiring method	Wiring to the supplied power supply connector			
	Applicable wire size	0.2 to 2.5 mm ² (AWG 12 to 24)			
	Applicable ferrule terminal, tool	Applicable wire size (mm ² /AWG)	Applicable ferrule terminal type (sleeve length)	Crimping tool model	Manufacturer
		0.25/24	Al 0,25-10 YE (10 mm), Al 0,25-8 YE (8 mm)	CRIMPFOX 6	PHOENIX CONTACT GmbH & Co. KG
		0.3, 0.34/22	Al 0,34-10 TQ (10 mm), Al 0,34-8 TQ (8 mm)		
		0.5/20	Al 0,5-10 WH (10 mm), Al 0,5-8 WH (8 mm)		
		0.75/18	Al 0,75-10 GY (10 mm), Al 0,75-8 GY (8 mm)	206-220	WAGO Company of Japan, Ltd
		0.08 to 0.34/28 to 22	216-302 (8 mm)		
0.34/24, 22		216-302 (8 mm)			
0.5/22, 20		216-201 (8 mm)			
0.75/20, 18	216-202 (8 mm)	206-1204			
Sound	Input terminal	$\phi 3.5$ minijack			
	Maximum output	3.5W			
	Sound pressure level	90 dB max. at 1 m ¹ Equivalent to the noise of railroad underpasses			
	Volume control	10 levels (Use the rotary switch of the speaker.)			
Connectable GOTs (manufactured by Mitsubishi Electric Corporation)	GOT2000 series	GT25 wide models with a built-in sound output interface		Sound output unit (GT15-SOUT) needs to be mounted on the extension interface.	
	GOT1000 series	GT27 models	GT25 models except GT2505-VTBD		
GT25 open frame models					
MELIPC series	GT16 models				
Connectable MELIPCs (manufactured by Mitsubishi Electric Corporation)	MELIPC series	MELIPC MI3000 with a built-in sound output interface		HDMI splitter with an aux. port needs to be connected.	
		MELIPC MI5000, MI1000			
Applicable standard		CE, KC			

*1: For GT25 wide models: The sound pressure level varies with the sound source and usage environment.

External dimensions



Packing list

Name	Model	Remarks
Panel Mount HMI Speaker	FA1-GT0S04W	Speaker, audio cable (1 m), power supply connector, cable clamp, user's manual

The company names and product names mentioned in this document are either registered trademarks or trademarks of their respective companies.

MITSUBISHI ELECTRIC ENGINEERING COMPANY LIMITED

NAGOYA ENGINEERING OFFICE | 139, Shimoyashikicho, Shimoyashiki, Kasugai, Aichi, 486-0906, Japan

Precautions for Choosing the Products

Mitsubishi Electric Engineering will not be held liable for damage caused by factors found not to be the cause of Mitsubishi Electric Engineering; opportunity losses or lost profits caused by faults in the Mitsubishi Electric Engineering products; damage, secondary damage, accident compensation caused by special factors unpredictable by Mitsubishi Electric Engineering; damages to products other than Mitsubishi Electric Engineering products; and to other duties.

For safe use

- To use the products given in this publication properly, always read the relevant manuals before beginning operation.
- The products have been manufactured as general-purpose parts for general industries, and are not designed or manufactured to be incorporated in a device or system used in purposes related to human life.
- Before using the products for special purposes such as nuclear power, electric power, aerospace, medicine or passenger-carrying vehicles, consult with Mitsubishi Electric Engineering.
- The products have been manufactured under strict quality control. However, when installing the products where major accidents or losses could occur if the products fail, install appropriate backup or fail-safe functions in the system.