

Easy Replacement from SHARP PLC to Mitsubishi Electric MELSEC Series

We do not want to decrease productivity due to long production line down time.

We do not want any trouble during replacement.

It is time to replace the equipment ...

The program itself should be replaced.

[SHARP PLC] to [MELSEC series]

Easy replacement

Wiring errors

**Risk
avoided**

* When using the existing wiring

Work time

Reduced by
approx. 60%

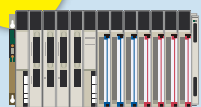
* According to our investigation

Advantages of replacement

Enabling IoT-driven equipment

**Increasing efficiency
of maintenance**

SHARP



JW50H/70H/100H series



JW300/20H/30H series

Target series

Mitsubishi
Electric



MELSEC iQ-R series



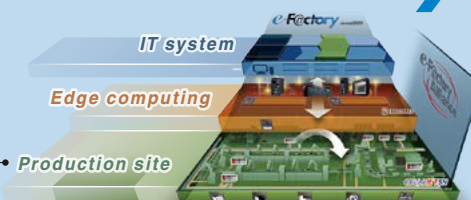
MELSEC-Q series

FAGoods Products

e-Factory



Upgrade



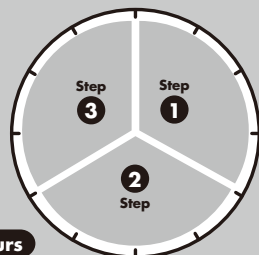
Source: Mitsubishi Electric Corporation

Increased efficiency of upgrading equipment will minimize the production line downtime.

Before

We would like to upgrade our programmable controller. But...

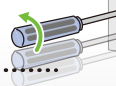
it takes time and we do not want to stop production lines for a long time.



Work hours

Step 1 Disconnecting cables

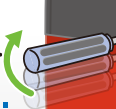
All cables need to be disconnected.



Existing programmable controller

Step 2 Connecting cables

All cables need to be connected.

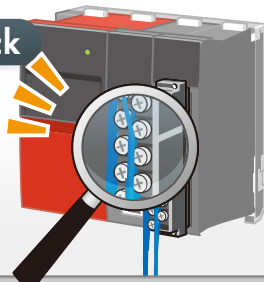


(Drilling of additional base unit installation holes is required.)

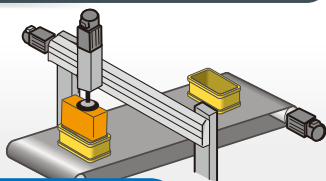
New programmable controller

Step 3 Wiring check

All cables need to be checked.



Step 4 Operation (including test operation)



It takes much time to perform Steps ①, ②, and ③.



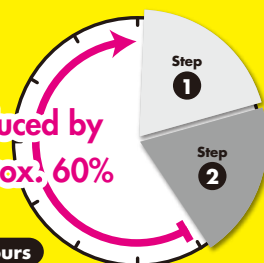
After

Simple replacement procedure



Reduced by approx. 60%

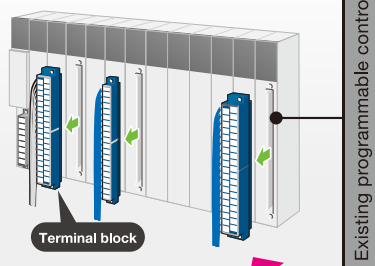
Work hours



Step 1 Removing terminal blocks

Only two steps to complete the replacement

The wiring work time is reduced significantly because the existing wiring (terminal blocks) can be used as it is.



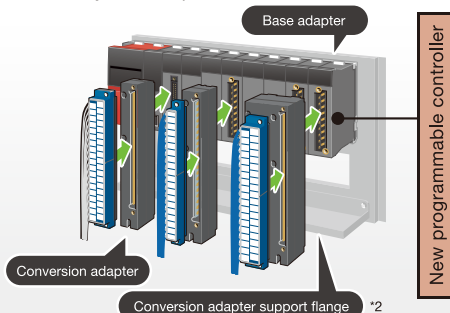
Existing programmable controller

The existing wiring can be restored easily.

Step 2 Installing terminal blocks

No wiring check^{*1}

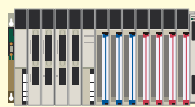
The production line downtime is minimized because test operation can be performed immediately after replacement.



New programmable controller

^{*1}: Power cables may need to be checked in some cases.

^{*2}: These products may not be required depending on the new programmable controller series.

Replacing the
JW series large typeExisting series Manufactured by SHARP
JW50H/70H/100H seriesReplacing the
JW series small typeExisting series Manufactured by SHARP
JW300/20H/30H series

MELSEC iQ-R series

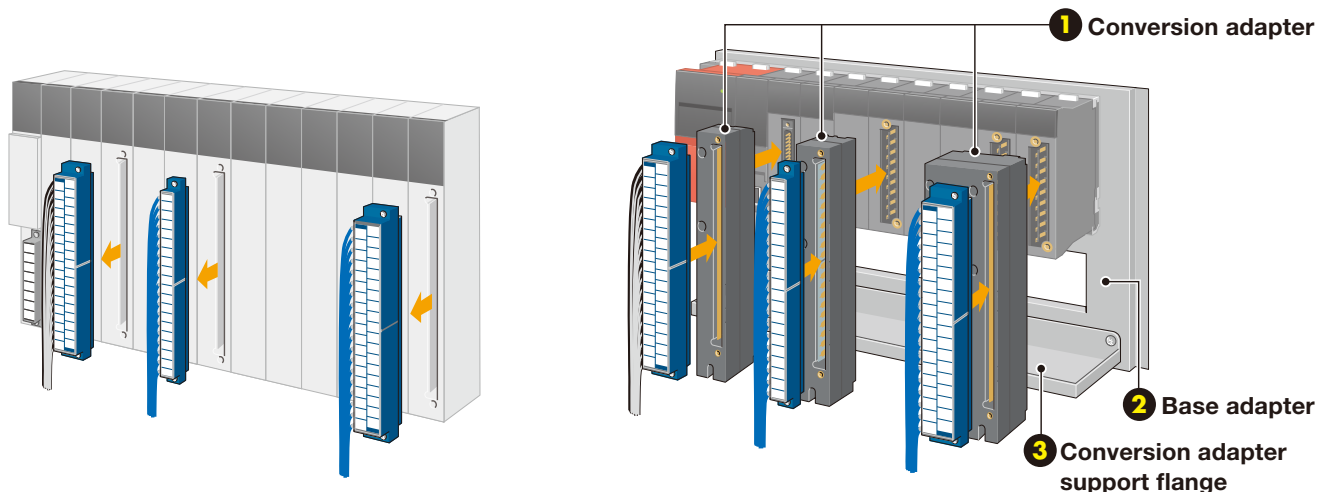


MELSEC-Q series

Before

JW50H/70H/100H
(large type)
seriesInstall the terminal blocks
as they are.

After

MELSEC iQ-R
series

1 Conversion adapter



An adapter to connect the existing wiring to a new (MELSEC iQ-R/MELSEC-Q series) programmable controller.

2 Base adapter



An adapter to install a new (MELSEC iQ-R /MELSEC-Q series) programmable controller base unit and a conversion adapter support flange. The existing base unit installation holes can be used.

3 Conversion adapter support flange



A support flange that secures the lower part of a conversion adapter.

Examples of replacing the JW50H/70H/100H (large type) series with the MELSEC iQ-R series

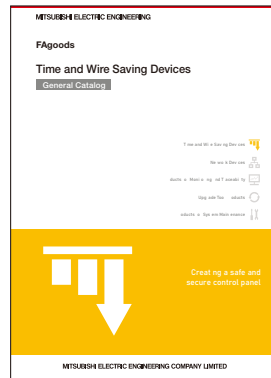
Before		After			
JW series		MELSEC iQ-R series		Upgrade tool product	
Product	Model	Product	Model	Product	Model
I/O module	JW-32N	I/O module	RX41C4	Conversion adapter	ERNT-1JR32N34N
	JW-11N		RX10		ERNT-1JR11N13S
	JW-33S		RY20S6 × 2		ERNT-1JR33S
Base unit	JW-13BU	Base unit	R38B	Base adapter	ERNT-AQB38N
				Conversion adapter support flange	ERNT-1AR8F

■ Related catalogs

Upgrade Tool Products



Time and Wire Saving Devices



The company names and product names mentioned in this document are either registered trademarks or trademarks of their respective companies. In some cases, trademark symbols such as 'TM' or '®' are not specified in this document.

MITSUBISHI ELECTRIC ENGINEERING COMPANY LIMITED

NAGOYA ENGINEERING OFFICE | 1-9, Daiko-Minami, 1-Chome, Higashi-ku, Nagoya, Aichi 461-0047 Japan

www.mitsubishielectricengineering.com/sales/fa/meefan/ ►



Precautions for Choosing the Products

Mitsubishi Electric Engineering will not be held liable for damage caused by factors found not to be the cause of Mitsubishi Electric Engineering; opportunity losses or lost profits caused by faults in the Mitsubishi Electric Engineering products; damage, secondary damage, accident compensation caused by special factors unpredictable by Mitsubishi Electric Engineering; damages to products other than Mitsubishi Electric Engineering products; and to other duties.

For safe use

- To use the products given in this publication properly, always read the relevant manuals before beginning operation.
- The products have been manufactured as general-purpose parts for general industries, and are not designed or manufactured to be incorporated in a device or system used in purposes related to human life.
- Before using the products for special purposes such as nuclear power, electric power, aerospace, medicine or passenger-carrying vehicles, consult with Mitsubishi Electric Engineering.
- The products have been manufactured under strict quality control. However, when installing the products where major accidents or losses could occur if the products fail, install appropriate backup or fail-safe functions in the system.