

General-purpose PLC → MELSEC-Q series

Upgrade tool "Universal conversion adapter"

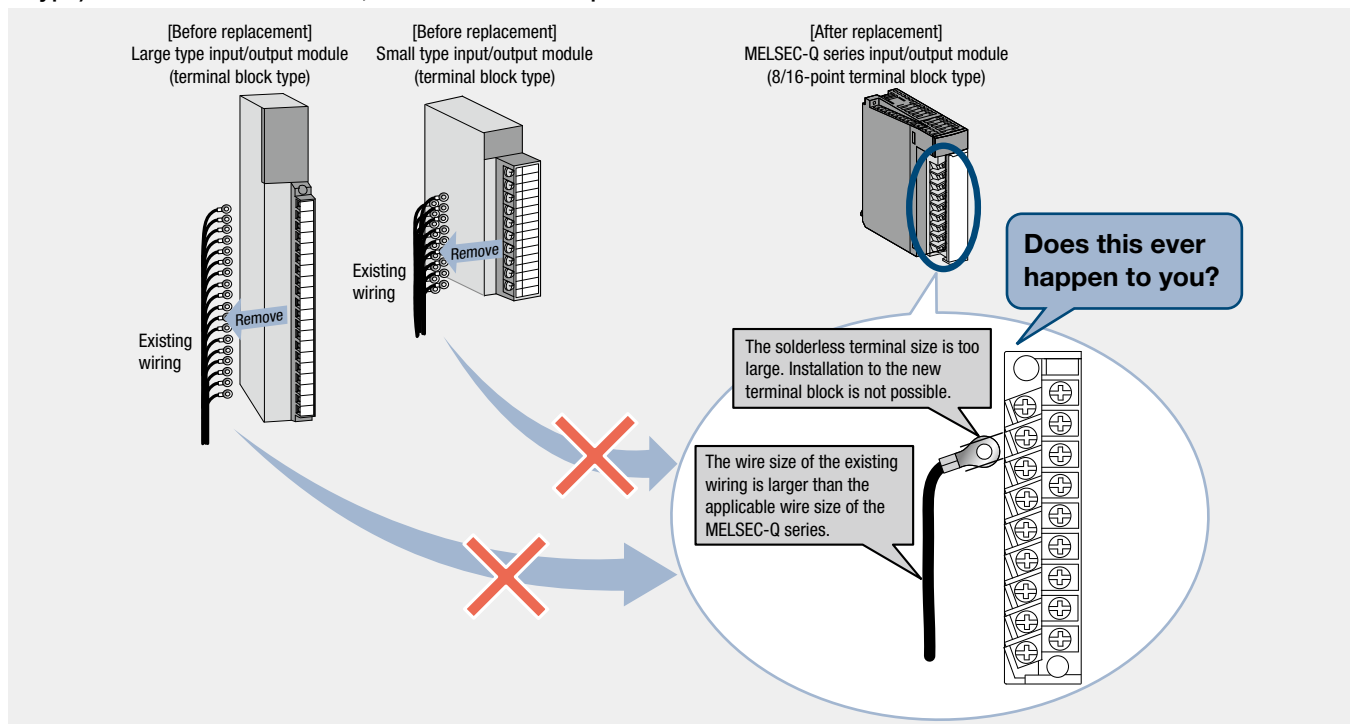
Replacing general-purpose PLC with the MELSEC-Q series

■ Universal conversion adapter

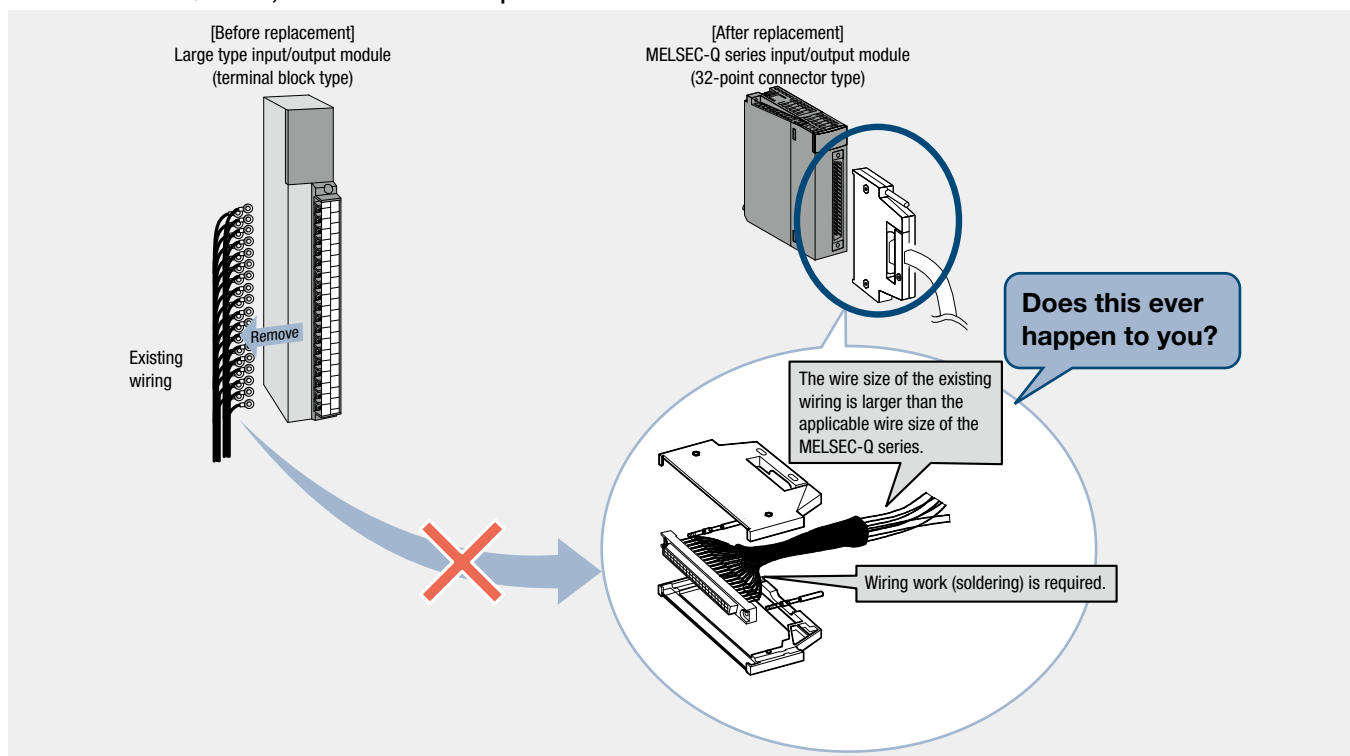
The universal conversion adapter reduces the time required for rewiring input/output modules (terminal block type) when replacing a general-purpose PLC with the MELSEC-Q series programmable controller manufactured by Mitsubishi Electric.

Product overview

- You want to replace input/output modules (terminal block type) of a general-purpose PLC with those (terminal block type) of the MELSEC-Q series, but there are some problems.



- You want to replace input/output modules (terminal block type) of a general-purpose PLC with those (connector type) of the MELSEC-Q series, but there are some problems.



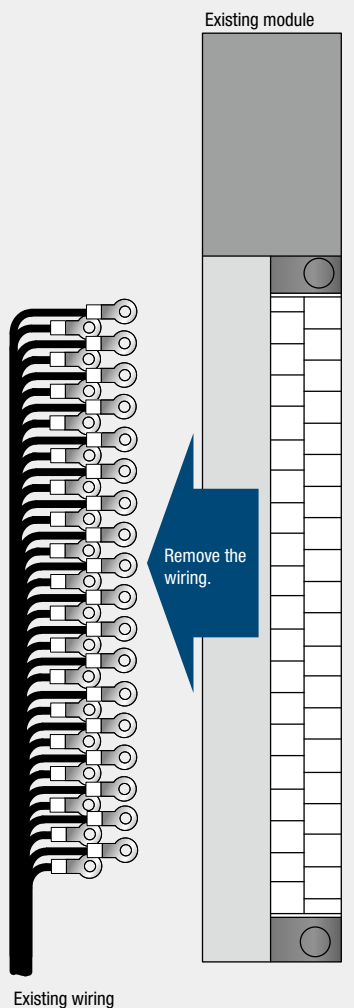
Consider the use of the universal conversion adapter as a solution.

If the specifications of the devices currently connected satisfy the specifications of the MELSEC-Q series input/output module, you can use the universal conversion adapter for replacement, regardless of the manufacturer of the PLC!

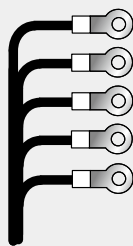
Note that this product is designed under the premises that rewiring (reinstallation of existing wiring to the terminal block) will be performed by the user.

Replacement procedure

1) Remove the wiring from the terminal block of the existing module.



2) Check the solderless terminals.

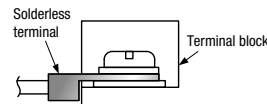
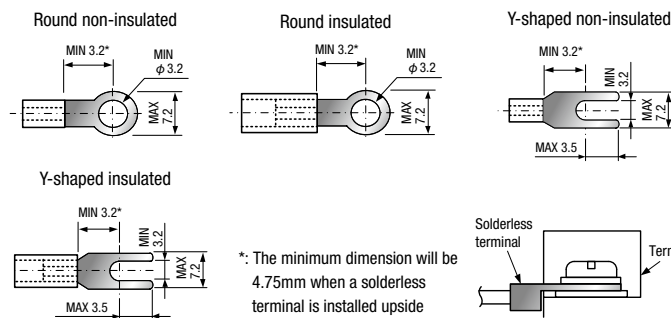


- Check the dimensions of solderless terminals.
- Change the terminals which are not applicable to the universal conversion adapter.

Universal conversion adapter (large type)

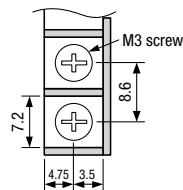
• Applicable solderless terminals

Unit: mm



• Terminal block shape

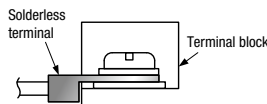
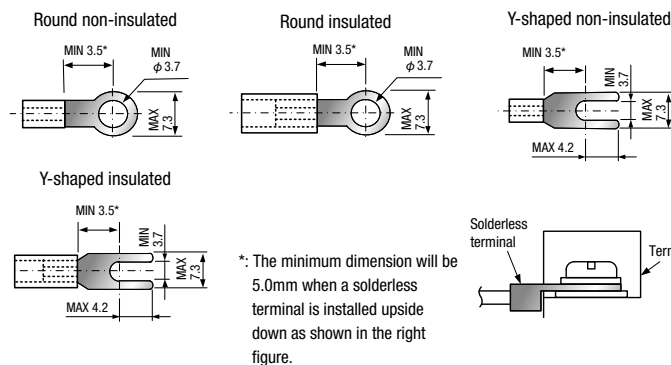
Unit: mm



Universal conversion adapter (small type)

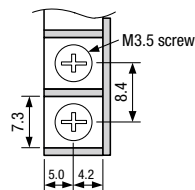
• Applicable solderless terminals

Unit: mm



• Terminal block shape

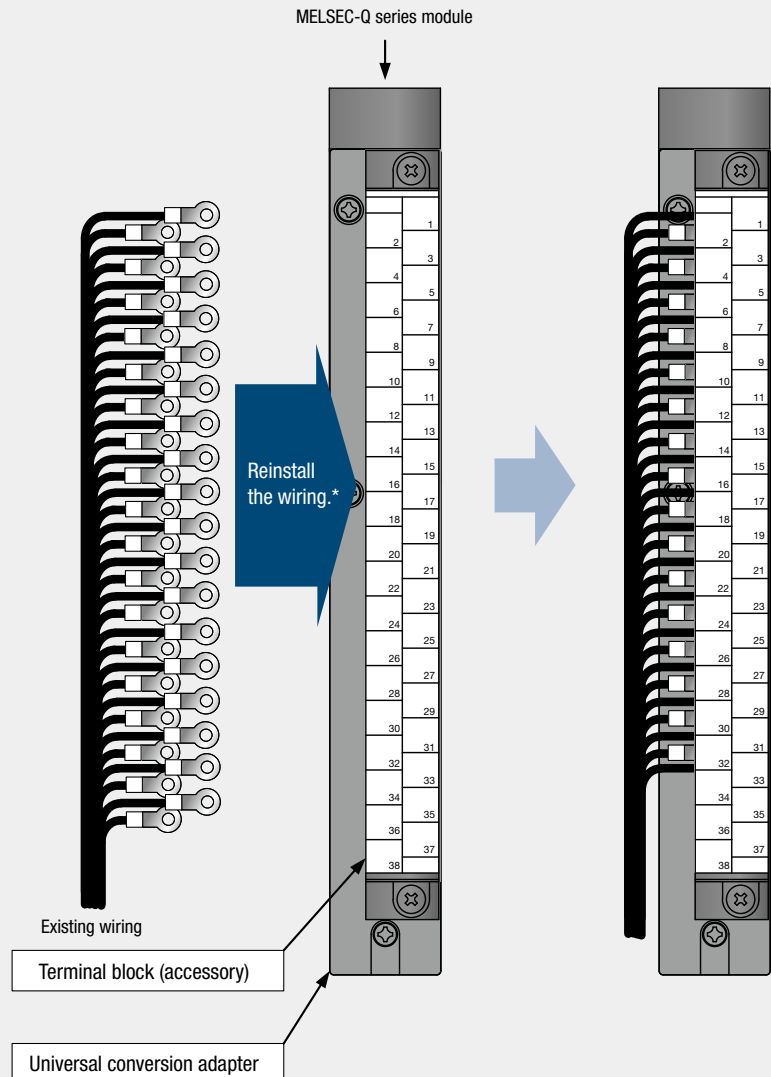
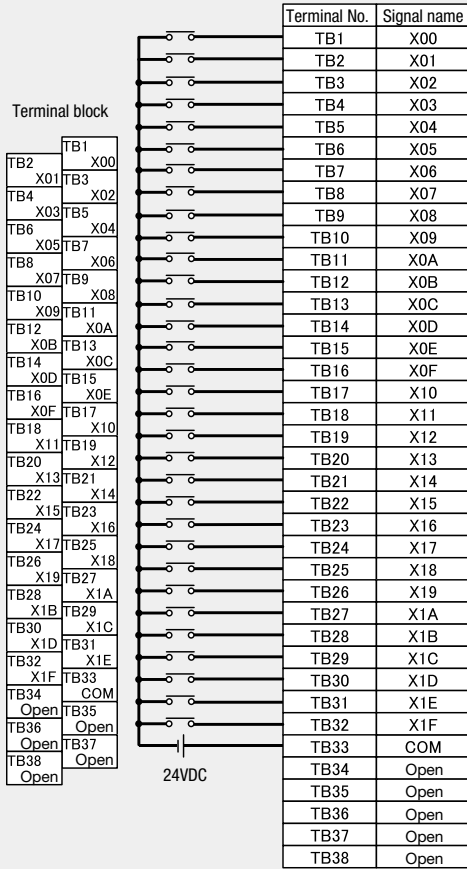
Unit: mm



3) Reinstall the removed wiring to the terminal block of the universal conversion adapter.

Check the external connection diagram of each MELSEC-Q series module used, and reinstall the removed wiring to the terminal block of the universal conversion adapter.

External connection diagram (example)

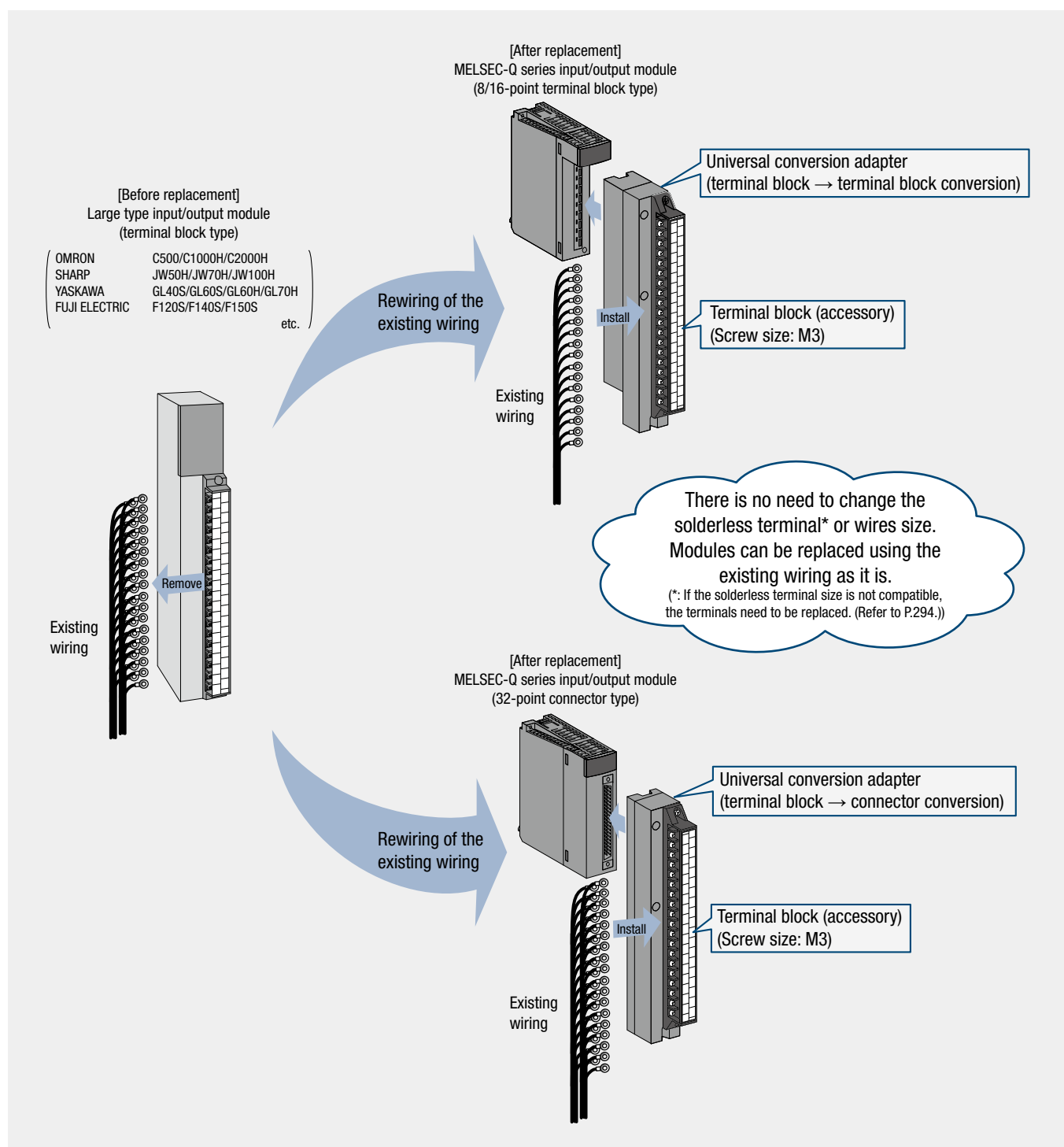


*: After replacement, connect wires in accordance with the terminal numbers and signal names of the universal conversion adapter.

*: Depending on the change in the number of points per common (for example 8 points/common → 16 points/common), the connected devices (such as switches) may also need to be changed.

*: When any wires are left unconnected, connect them to open terminals or insulate them.

Replacing a general-purpose PLC (large type) with the MELSEC-Q series



Replacing a general-purpose PLC (small type) with the MELSEC-Q series

